
SUITE 1 LEVEL 1
397 SMITH STREET
FITZROY VIC 3065

p +61 3 9419 7000
f +61 3 9419 9007

e info@grimbos.com.au
w www.grimbos.com.au

ABN 80591238414

General Requirements for Access

AS1428 Series – 2009 Edition

COPYRIGHT GRIMBOS BUILDING SURVEYORS

SUITE 1 LEVEL 1
397 SMITH STREET
FITZROY VIC 3065

p +61 3 9419 7000
f +61 3 9419 9007

e info@grimbos.com.au
w www.grimbos.com.au

ABN 80591238414

ACCESSIBLE TOILET

MINIMUM CLEARANCES

- > Compartment Size – 2100mm x 2700mm
- > Pan Circulation Space – 1900mm x 2300mm
- > Compartment Height – 2100mm
- > Clear Door Width – 850mm
- > Edge of Pan to Wash Basin – 1400mm
- > Setback of Washbasin from Door – 300mm

DOOR LATCH

- > Height – 900 to 1100mm (measured to top of handle from finished floor level)
- > Clearance – 35 to 45mm (measured from inside of handle to door face)
- > Handle Grip – 20mm min curve at end of handle to ensure grip
- > Snib locks – 45mm minimum length of spindle
- > Push Buttons – 25mm minimum diameter (height of 900 to 1200mm permitted)

PAN

- > Colour contrasting seat (minimum 30% with floor, pan and wall)
- > Height of Pan – 460 to 480mm (measured from finished floor level to top of seat)
- > Width of Pan – 400mm maximum
- > Side Setback from Wall – 450 to 460mm (measured to middle of pan)
- > Edge of Pan to Rear Wall - 800 ± 10mm (min 600mm to cistern)
- > Backrest – 120 to 150mm from top of seat at 90-100° angle
- > Backrest Width – 350 to 400mm
- > Backrest Height – 150 to 200mm
- > Toilet Paper Dispenser Zone – 700mm from finished floor level and within 300mm from edge of pan

GRABRAILS (90° OR 35° TO 45° OPTION)

- > Side of Pan Height – 800 to 810mm (measured to top of grabrail from finished floor level)
- > Side of Pan Setback from Wall – 50 to 60mm
- > Back of Pan Setback from Cistern – 50mm maximum
- > Back of Pan Length – 300mm (alternatively full length if cistern is inbuilt)

FIXTURES AND FITTINGS

- > Mirror - 900 to 1850mm in height and minimum 350mm wide
- > Shelf – 900 to 1000mm in height, 300 to 400mm in length and minimum 120mm wide (separate fixture)
- > Dispensers (soap/towel) – 900 to 1100mm from finished floor level (min 500mm from corners)
- > Clothes hanging device – 1200 to 1350mm from finished floor level (min 500mm from corners)

WASHBASIN

- > Height – 800 to 830mm
- > Width – 450mm
- > Setback from Wall – 425mm (measured to middle of washbasin)

SHOWER

- > Circulation Space (open shower) – 1600mm x 2350mm
- > Circulation Space (added third side) – 1600mm x 1400mm
- > Shower Area – 1160mm x 1100mm
- > Seat Height – 470 to 480mm (measured from finished floor level to top of seat)
- > Seat – 390 to 400mm in width and minimum 1000mm in length (self draining and slip resistant)
- > Grabrail Height – 800 to 810mm
- > Top of Shower Head Support Grabrail – 1880 to 1900mm from finished floor level
- > Shower Head Support Setback from Wall – 580 to 600mm

FLOOR GRADES (REFER TO AS3740 FOR ADDITIONAL WATERPROOFING REQUIREMENTS)

- > Shower Area – 1:60 to 1:80 fall to shower waste outlet
- > Bathroom Area – 1:80 to 1:100

SIGNAGE

- > Braille Indicators with Unisex International Symbol located at 1250mm from finished floor level measured to bottom of sign. RH or LH determines right or left hand sided pan grabrail location. Mounted at door latch side 50-300mm from architrave and if not possible, then on the door itself.

SUITE 1 LEVEL 1
397 SMITH STREET
FITZROY VIC 3065

p +61 3 9419 7000
f +61 3 9419 9007

e info@grimbos.com.au
w www.grimbos.com.au

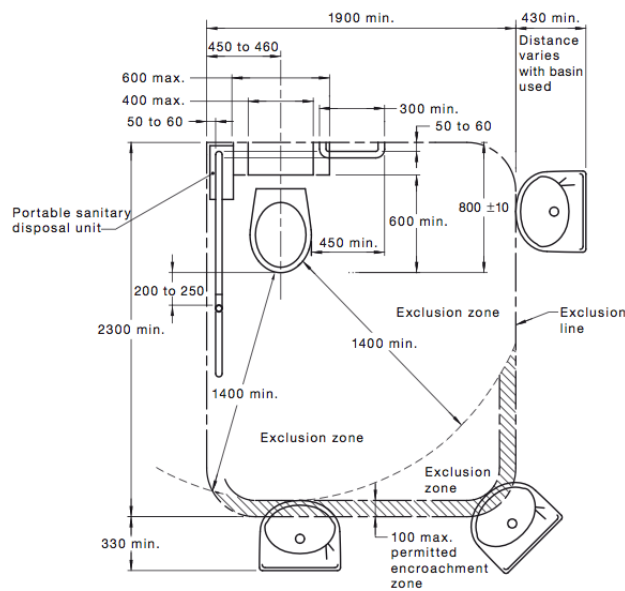
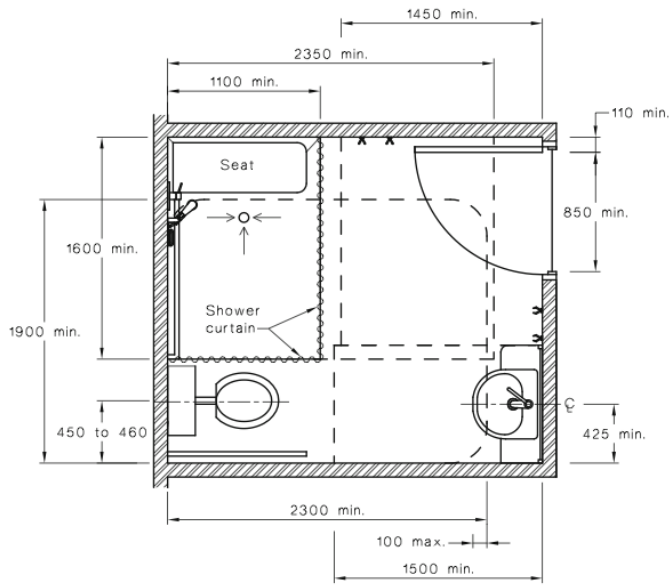
ABN 80591238414

SUITE 1 LEVEL 1
397 SMITH STREET
FITZROY VIC 3065

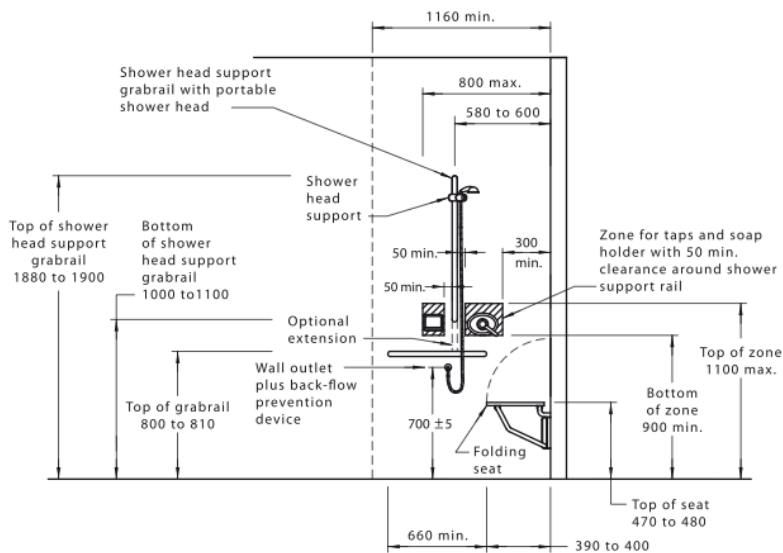
p +61 3 9419 7000
f +61 3 9419 9007

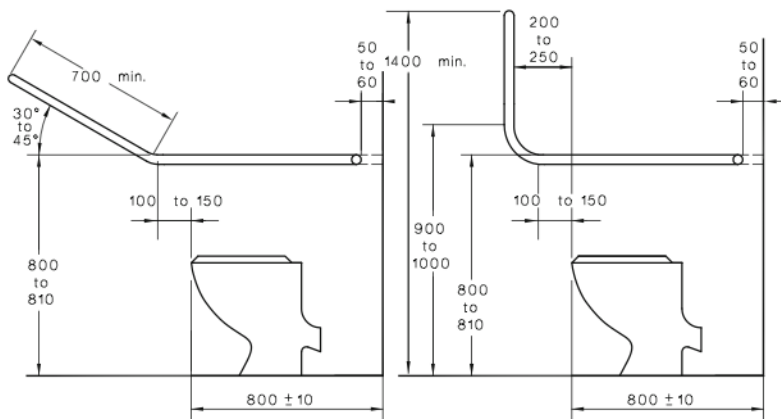
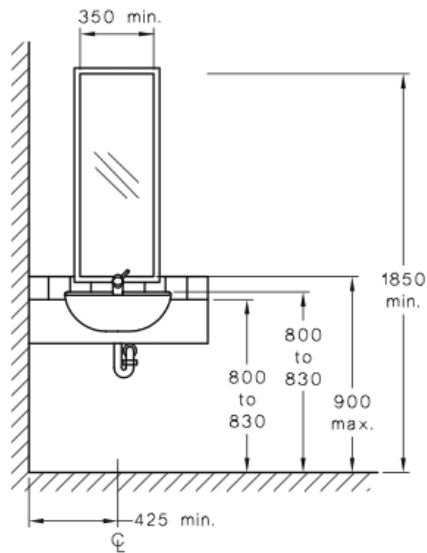
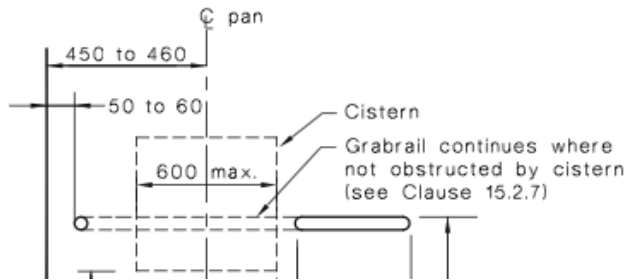
e info@grimbos.com.au
w www.grimbos.com.au

ABN 80591238414



LEGEND
----- Circulation space line





SUITE 1 LEVEL 1
397 SMITH STREET
FITZROY VIC 3065

p +61 3 9419 7000
f +61 3 9419 9007

e info@grimpos.com.au
w www.grimpos.com.au

ABN 80591238414

AMBULANT TOILET

GRIMBOS
BUILDING SURVEYORS

SUITE 1 LEVEL 1
397 SMITH STREET
FITZROY VIC 3065

p +61 3 9419 7000
f +61 3 9419 9007

e info@grimbos.com.au
w www.grimbos.com.au

ABN 80591238414

MINIMUM CLEARANCE

- > Compartment Width – 900 to 920mm (measured wall to wall)
- > Compartment Cubicle Depth – 900mm minimum (measured from edge of pan to door)
- > Clear Circulation Space – 900mm x 900mm in front of door (depending on doorway option)
- > Clear Door Width – 700mm

DOOR LATCH

- > Height – 900 to 1100mm (measured to top of handle from finished floor level)
- > Clearance – 35 to 45mm (measured from inside of handle to door face)
- > Handle Grip – 20mm min curve at end of handle to ensure grip
- > Snib locks – 45mm minimum length of spindle

PAN

- > Height of Pan - 460 to 480mm (measured from finished floor level to top of seat)
- > Edge of Pan to Rear Wall – 610 to 660mm

GRABRAILS (90° OR 35° TO 45° OPTION)

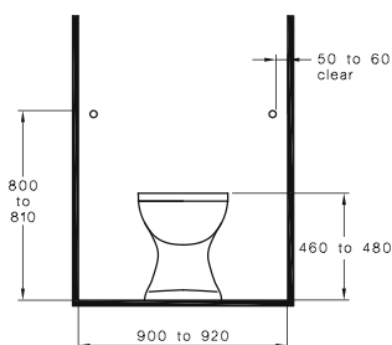
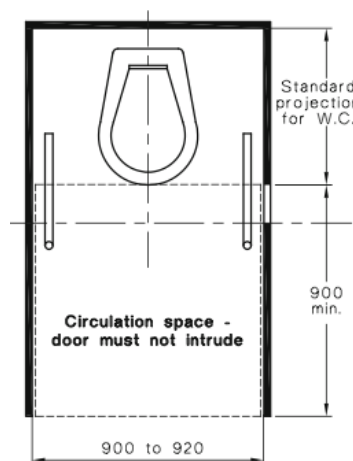
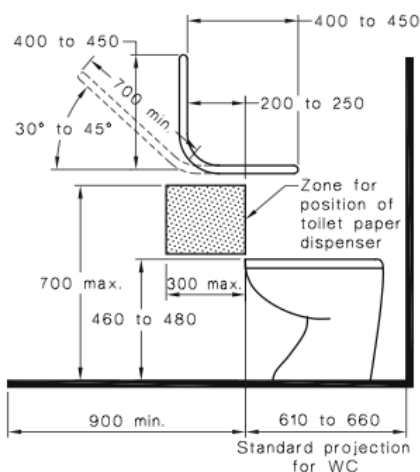
- > Height – 800 to 810mm (measured to top of grabrail from finished floor level)
- > Setback from Wall – 50 to 60mm
- > Size – 30 to 40mm outside diameter

Note, compartment construction, materials and fastenings are required to be able to withstand a force of 1100N applied at any position and in any direction without deformation or loosening.

FIXTURES AND FITTINGS

- > Clothes hanging device – 1200 to 1350mm from finished floor level (min 500mm from corners)
- > Toilet Paper Dispenser Zone – 700mm from finished floor level and 300mm from edge of pan

Note, removable door hinges required to be provided if door swinging inwards and minimum 1200mm from edge of pan to doorway is not achievable.



SUITE 1 LEVEL 1
397 SMITH STREET
FITZROY VIC 3065

p +61 3 9419 7000
f +61 3 9419 9007

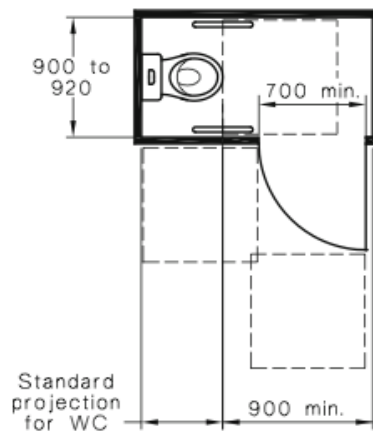
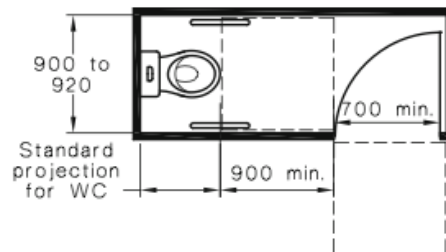
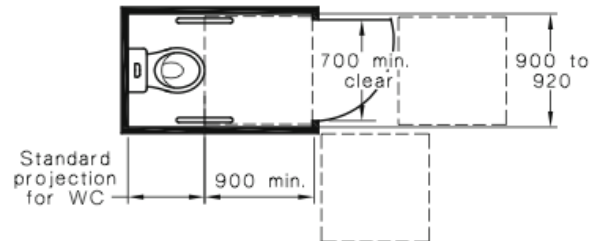
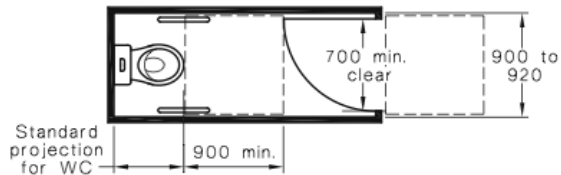
e info@grimpos.com.au
w www.grimpos.com.au

ABN 80591238414

LEGEND:



900 x 900 circulation space



SUITE 1 LEVEL 1
397 SMITH STREET
FITZROY VIC 3065

p +61 3 9419 7000
f +61 3 9419 9007

e info@grimbos.com.au
w www.grimbos.com.au

ABN 80591238414

SUITE 1 LEVEL 1
397 SMITH STREET
FITZROY VIC 3065

p +61 3 9419 7000
f +61 3 9419 9007

e info@grimbos.com.au
w www.grimbos.com.au

ABN 80591238414

RAMPS, WALKWAYS & LANDINGS

DOOR THRESHOLD RAMP

- > Rise – 35mm maximum
- > Length – 280mm maximum
- > Gradient – 1:8 (not steeper)
- > Distance to Door – 20mm max (measured from top of ramp to door)
- > Edges – 45° splay where not abutting a wall

STEP RAMP

- > Rise – 190mm maximum
- > Length – 1900mm maximum
- > Gradient – 1:10 (not steeper)
- > Edges – 45° splay, minimum 450mm high wall/barrier or kerb rail where balustrade is provided
- > Landing – 1200mm or 1500mm where change of direction (additional requirements where door in landing)

KERB RAMP

- > Rise – 190mm maximum
- > Length – 1520mm maximum
- > Gradient – 1:8 (not steeper)
- > Landing – 1200mm or 1500mm x 2000mm at T-Intersection or 1500mm x 1500mm at single change of direction

RAMP (BETWEEN 1:14 AND 1:20)

- > Gradient: 1:14
- > Length – 9000mm maximum (for 1:14 ramp)
- > Setback – 900mm from line of boundary or 400mm from line of partition wall
- > Landing – 1200mm or 1500mm where change of direction (additional requirements where door in landing)

WALKWAY

- > Length – 15m maximum for 1:20 and 25m maximum for 1:33
- > Landings – 1:33 or shallower do not require landings

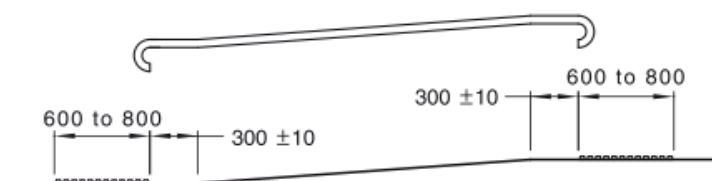
HANDRAILS (REQUIRED FOR 1:14 RAMP)

- > Height – 865mm to 1000mm
- > Setback from Wall – 50mm minimum
- > Handrail Size – 30 to 50mm
- > Clear Width – 1000mm (measured between internal edges of handrails)
- > Length – 300mm minimum extension past ramp on either side
- > Terminations – 180° turn, turn 180° and return to post, return to floor/post, down 90° to floor and 90° into side wall
- > Kerb Rail – 150mm minimum

TACTILES (REQUIRED FOR 1:14 RAMP)

- > Colour contrasting (minimum 30% with floor)
- > Location – top and bottom of ramp
- > Setback – 300 ± 10 from end of ramp
- > Length – 600 to 800mm or 300 to 400mm where landing less than 3000mm in length
- > Width – 1000mm minimum (distance between handrails)

Note, where tactiles are not required under the Building Code of Australia the handrails are required to be provided with a domed button 4 to 5mm in height and 10 to 12mm in diameter within 150 ± 10 from end of handrail.



All ramp and landing surfaces must be provided with a minimum slip resistant classification nominated in BCA Table D2.14 when tested in accordance with AS4586.

SUITE 1 LEVEL 1
397 SMITH STREET
FITZROY VIC 3065

p +61 3 9419 7000
f +61 3 9419 9007

e info@grimpos.com.au
w www.grimpos.com.au

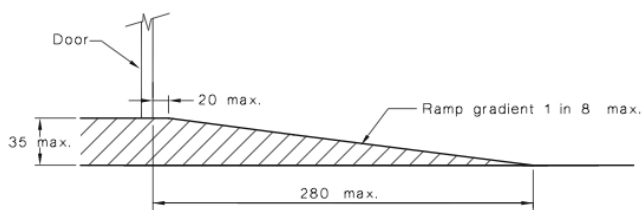
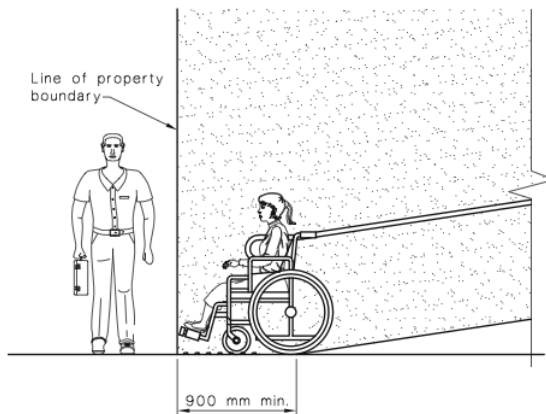
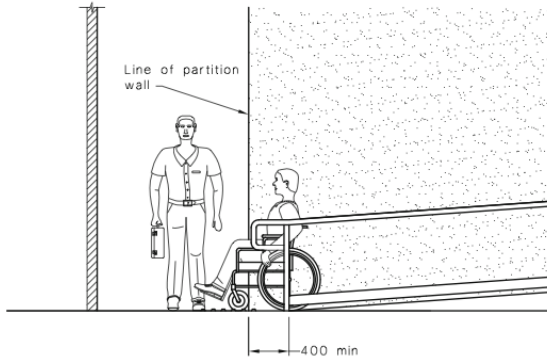
ABN 80591238414

SUITE 1 LEVEL 1
397 SMITH STREET
FITZROY VIC 3065

p +61 3 9419 7000
f +61 3 9419 9007

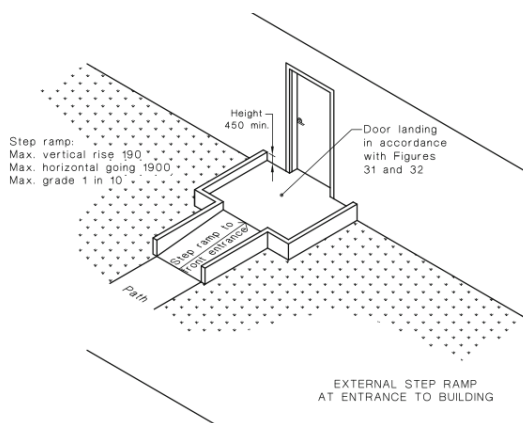
e info@grimbos.com.au
w www.grimbos.com.au

ABN 80591238414



DIMENSIONS IN MILLIMETRES

FIGURE 21 THRESHOLD RAMP

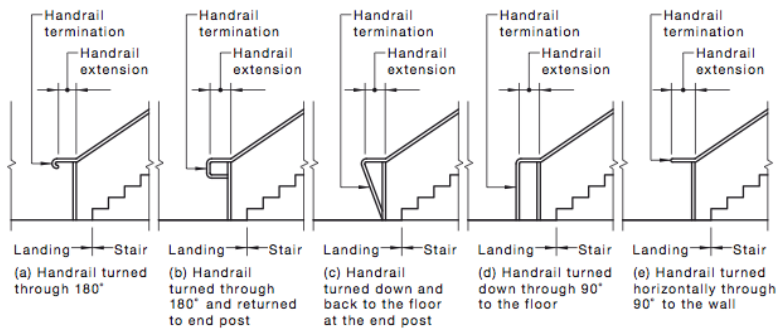
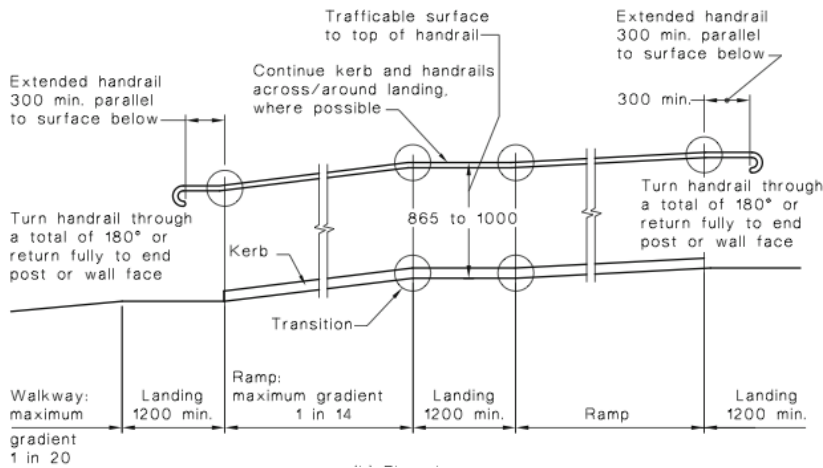
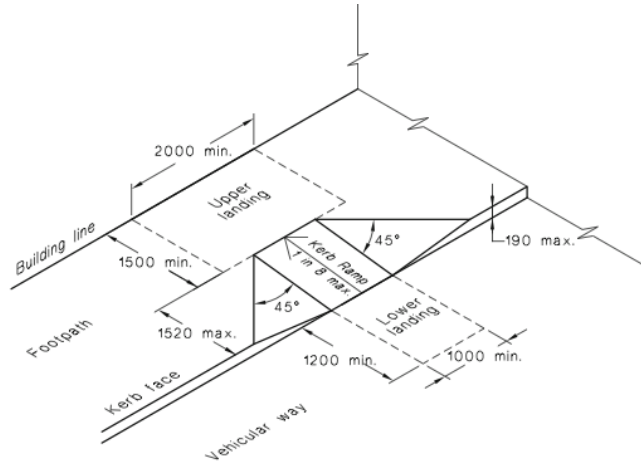


SUITE 1 LEVEL 1
397 SMITH STREET
FITZROY VIC 3065

p +61 3 9419 7000
f +61 3 9419 9007

e info@grimbos.com.au
w www.grimbos.com.au

ABN 80591238414



SUITE 1 LEVEL 1
397 SMITH STREET
FITZROY VIC 3065

p +61 3 9419 7000
f +61 3 9419 9007

e info@grimbos.com.au
w www.grimbos.com.au

ABN 80591238414

STAIRWAYS

STAIR CONSTRUCTION

- > Rise – 115 to 190mm and maximum 18 (consistent throughout)
- > Going – 250 to 355mm (consistent throughout)
- > Opaque risers to be provided
- > Stair nosing to have sharp intersection and not project beyond the face of the riser
- > Nosing Strip – 50 to 75mm and colour contrasting (minimum 30% with stair thread)
- > Setback – 900mm from line of boundary or 400mm from line of partition wall
- > Landing – 750mm minimum or width of door leaf

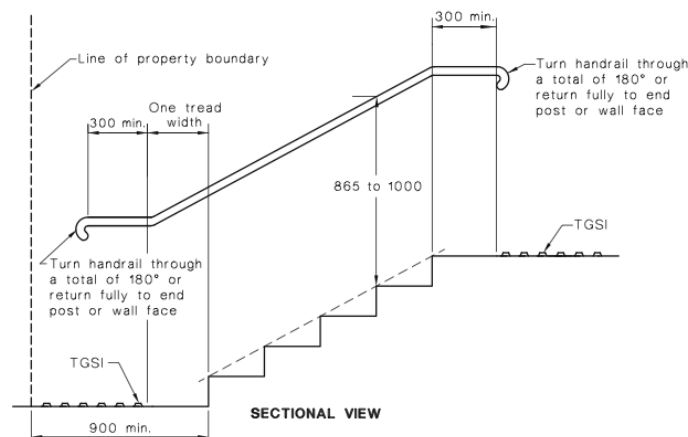
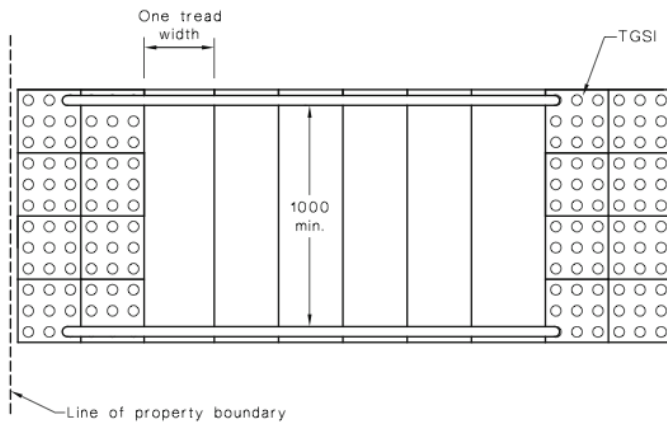
BALUSTRADE/HANDRAILS

- > Balustrade openings to not permit a 125mm sphere to pass through
- > Height – 865mm to 1000mm
- > Handrails Setback from Wall – 50mm minimum
- > Handrail Size – 30 to 50mm diameter
- > Clear Width – 1000mm (measured between internal edges of handrails)
- > Length – 300mm minimum extension (plus additional tread width at bottom of stair)
- > Terminations – 180° turn, turn 180° and return to post, return to floor/post, down 90° to floor and 90° into side wall

TACTILES

- > Colour contrasting (minimum 30% with floor)
- > Location – top and bottom of stairway
- > Setback – 300 ± 10 from last tread
- > Length – 600 to 800mm or 300 to 400mm where landing less than 3000mm in length
- > Width – 1000mm minimum (distance between handrails)

Note, where tactiles are not required under the Building Code of Australia the handrails are required to be provided with a domed button 4 to 5mm in height and 10 to 12mm in diameter within 150 ± 10 from end of handrail.

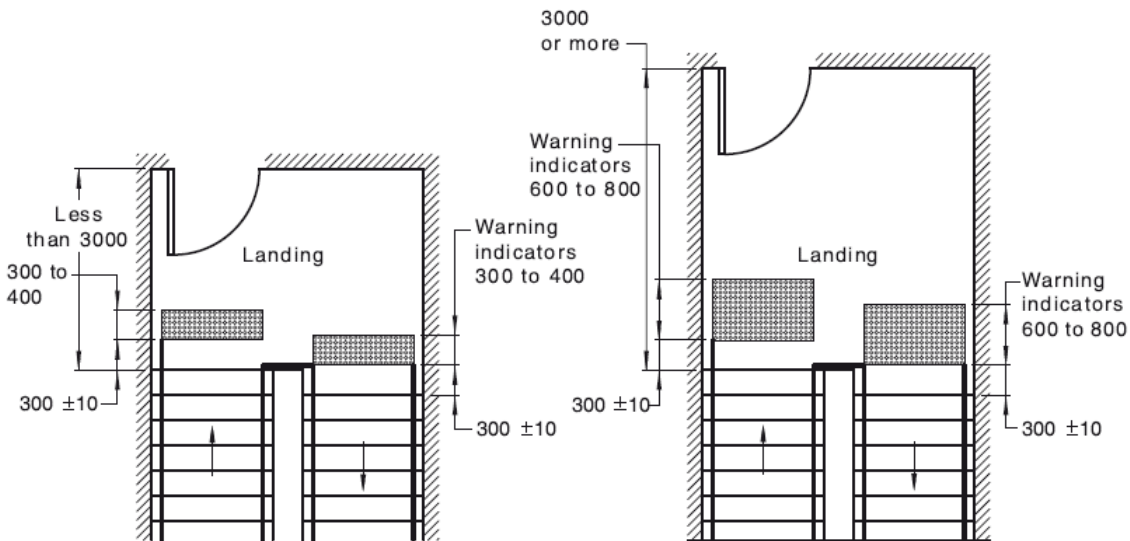
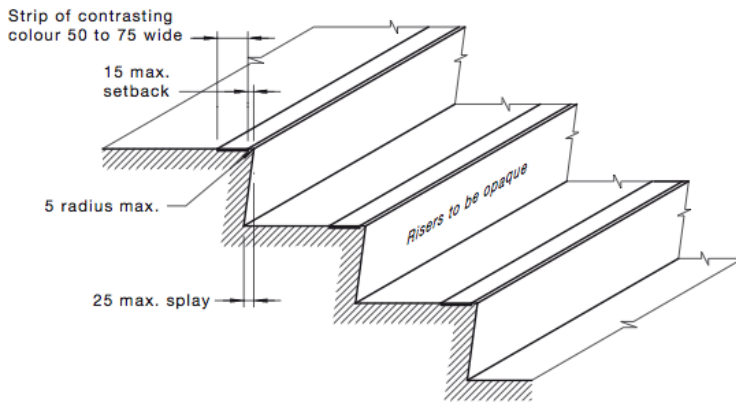
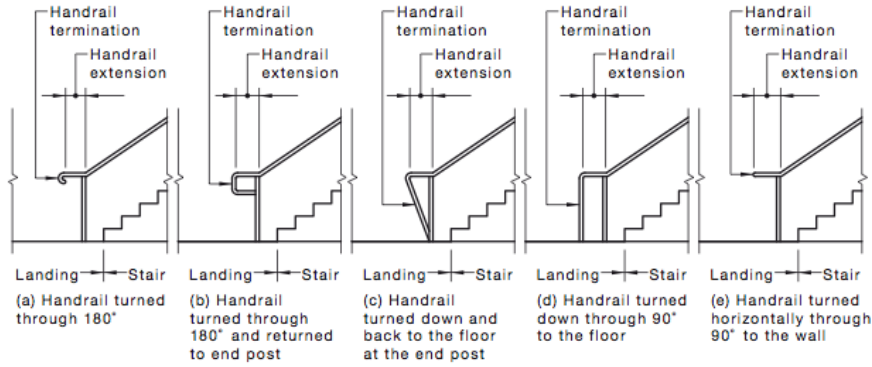


SUITE 1 LEVEL 1
397 SMITH STREET
FITZROY VIC 3065

p +61 3 9419 7000
f +61 3 9419 9007

e info@grimpos.com.au
w www.grimpos.com.au

ABN 80591238414



(a) Plan of warning tactile strips at a stairway landing less than 3000 with no continuous outer handrail

(b) Plan of warning tactile strips at a stairway landing 3000 or more

SUITE 1 LEVEL 1
397 SMITH STREET
FITZROY VIC 3065

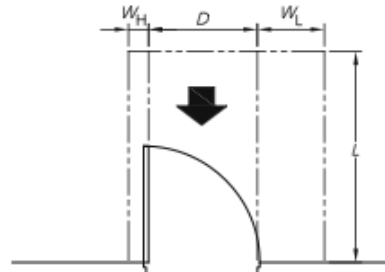
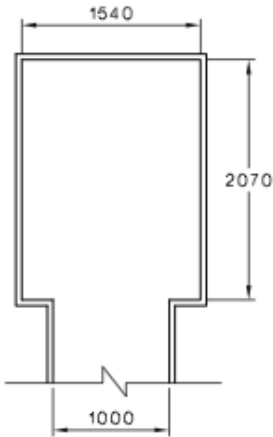
p +61 3 9419 7000
f +61 3 9419 9007

e info@grimbos.com.au
w www.grimbos.com.au

ABN 80591238414

CHANGE ROOMS

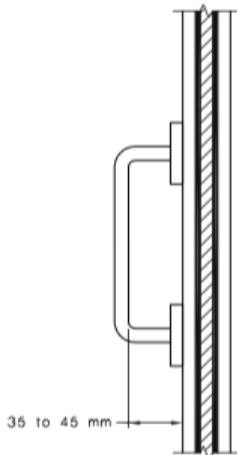
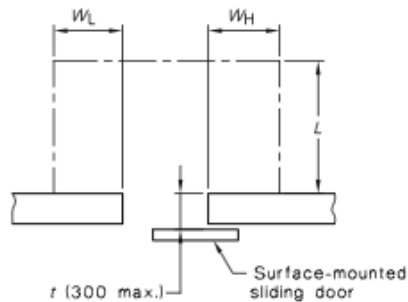
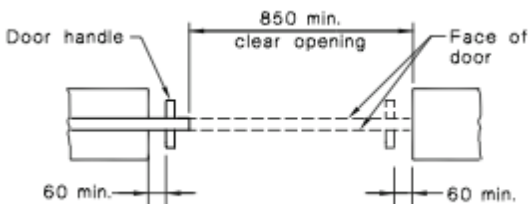
- > Compartment Size – 1540mm x 2070mm
- > Entry – 850mm clear door width or 1000mm if curtain provided
- > Door Circulation Space – 530mm latch side, 1450mm door circulation and 110 hinge side based on front approach



Dimension D	Dimension L	Dimension WH	Dimension WL
850	1450	110	530
900	1450	110	530
950	1450	110	530
1000	1450	110	530

SLIDING DOORS

- > Clear Door Width – 850mm
- > Handle Clearance – 35 to 45mm (measured from inside of handle to door face)
- > Type of Handle - 'D' type handles to be provided to sliding doors
- > Handle to be setback minimum 60mm from cavity when in open/closed position
- > Wall Width – 300mm maximum (surface mounted sliding doors)



Note, all doorways to have a minimum 30% colour contrasting between door leaf and door jamb, door leaf and adjacent wall, door leaf and architrave or door jamb and adjacent wall. (minimum luminance width of 50mm)

SUITE 1 LEVEL 1
397 SMITH STREET
FITZROY VIC 3065

p +61 3 9419 7000
f +61 3 9419 9007

e info@grimpos.com.au
w www.grimpos.com.au

ABN 80591238414