



GENERAL REQUIREMENTS FOR ACCESS

AS1428 SERIES — 2009 EDITION

—
COPYRIGHT GRIMBOS BUILDING SURVEYORS

GRIMBOS
BUILDING SURVEYORS

LEVEL 1 SUITE 1
397 SMITH STREET
FITZROY 3065

PHONE: +61 3 9419 7000
FAX: +61 3 9419 9007

INFO@GRIMBOS.COM.AU
GRIMBOS.COM.AU

ABN: 805 912 38414

ACCESSIBLE TOILET

MINIMUM CLEARANCES

- Compartment Size – 2100mm x 2700mm
- Pan Circulation Space – 1900mm x 2300mm
- Compartment Height – 2100mm
- Clear Door Width – 850mm
- Edge of Pan to Wash Basin – 1400mm
- Setback of Washbasin from Door – 300mm

DOOR LATCH

- Height – 900 to 1100mm (measured to top of handle from finished floor level)
- Clearance – 35 to 45mm (measured from inside of handle to door face)
- Handle Grip – 20mm min curve at end of handle to ensure grip
- Snib locks – 45mm minimum length of spindle
- Push Buttons – 25mm minimum diameter (height of 900 to 1200mm permitted)

PAN

- Colour contrasting seat (minimum 30% with floor, pan and wall)
- Height of Pan – 460 to 480mm (measured from finished floor level to top of seat)
- Width of Pan – 400mm maximum
- Side Setback from Wall – 450 to 460mm (measured to middle of pan)
- Edge of Pan to Rear Wall – 800 ± 10mm (min 600mm to cistern)
- Backrest – 120 to 150mm from top of seat at 90-100° angle
- Backrest Width – 350 to 400mm
- Backrest Height – 150 to 200mm
- Toilet Paper Dispenser Zone – 700mm from finished floor level and within 300mm from edge of pan

GRABRAILS (90° OR 35° TO 45° OPTION)

- Side of Pan Height – 800 to 810mm (measured to top of grabrail from finished floor level)
- Side of Pan Setback from Wall – 50 to 60mm
- Back of Pan Setback from Cistern – 50mm maximum
- Back of Pan Length – 300mm (alternatively full length if cistern is inbuilt)

FIXTURES AND FITTINGS

- Mirror – 900 to 1850mm in height and minimum 350mm wide
- Shelf – 900 to 1000mm in height, 300 to 400mm in length and minimum 120mm wide (separate fixture)
- Dispensers (soap/towel) – 900 to 1100mm from finished floor level (min 500mm from corners)
- Clothes hanging device – 1200 to 1350mm from finished floor level (min 500mm from corners)

WASHBASIN

- Height – 800 to 830mm
- Width – 450mm
- Setback from Wall – 425mm (measured to middle of washbasin)

ACCESSIBLE TOILET

SHOWER

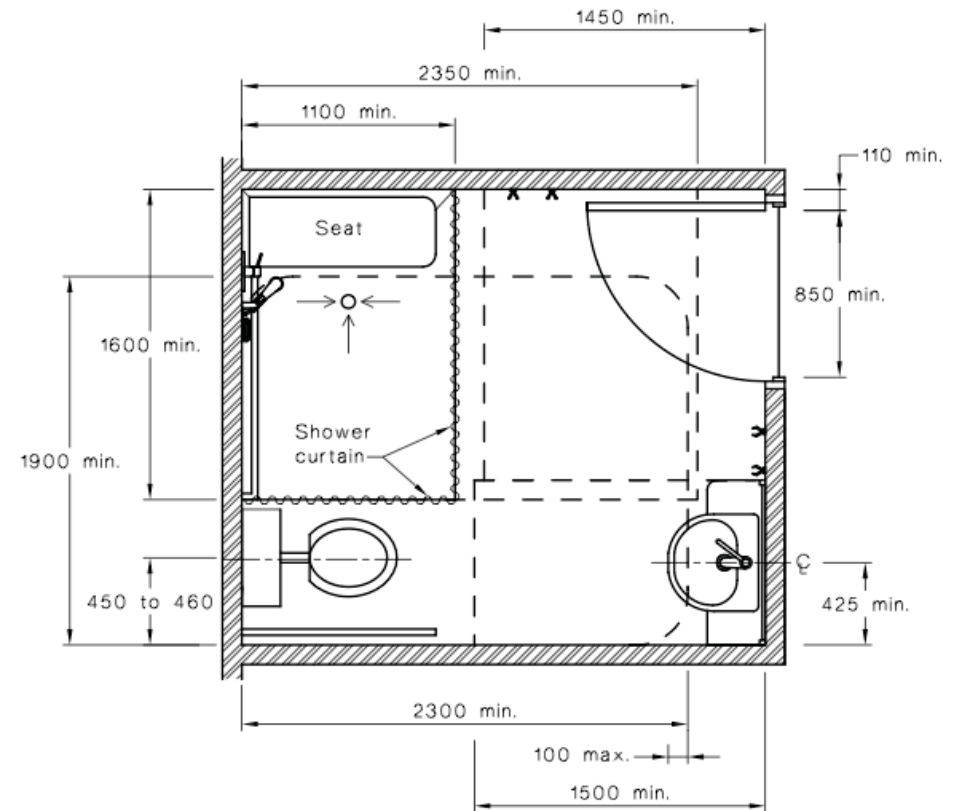
- Circulation Space (open shower) – 1600mm x 2350mm
- Circulation Space (added third side) – 1600mm x 1400mm
- Shower Area – 1160mm x 1100mm
- Seat Height – 470 to 480mm (measured from finished floor level to top of seat)
- Seat – 390 to 400mm in width and minimum 1000mm in length (self draining and slip resistant)
- Grabrail Height – 800 to 810mm
- Top of Shower Head Support Grabrail – 1880 to 1900mm from finished floor level
- Shower Head Support Setback from Wall – 580 to 600mm

FLOOR GRADES (REFER TO AS3740 FOR ADDITIONAL WATERPROOFING REQUIREMENTS)

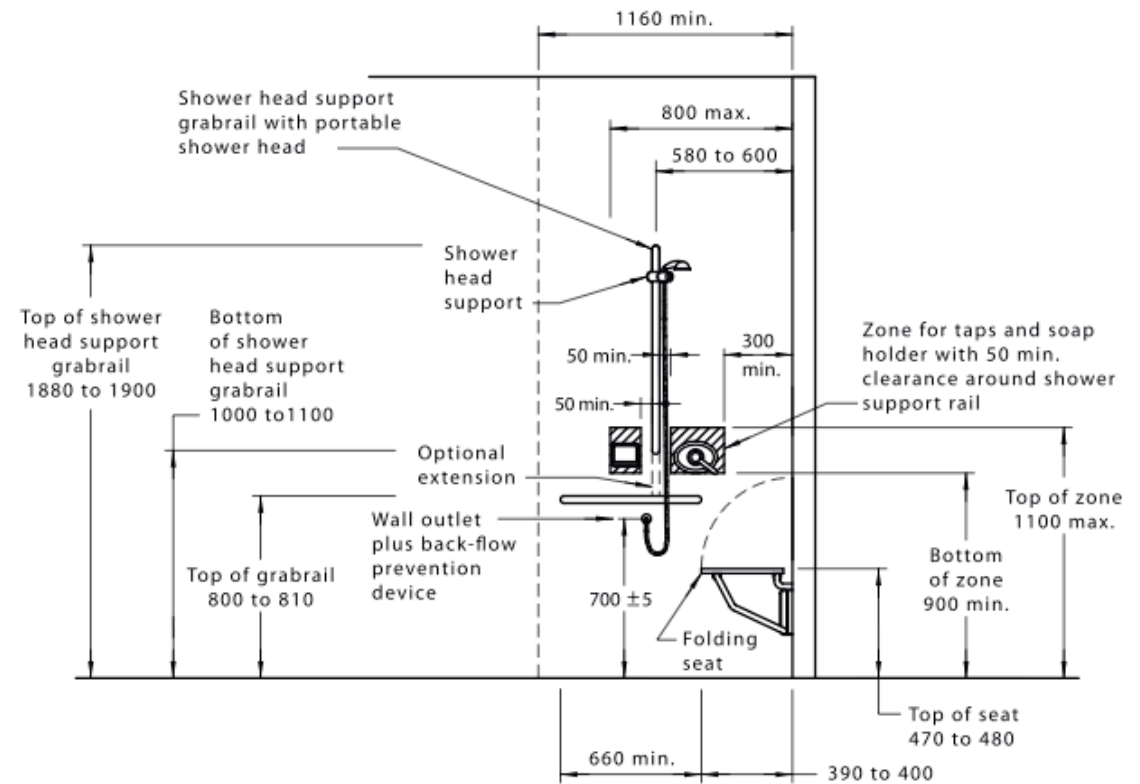
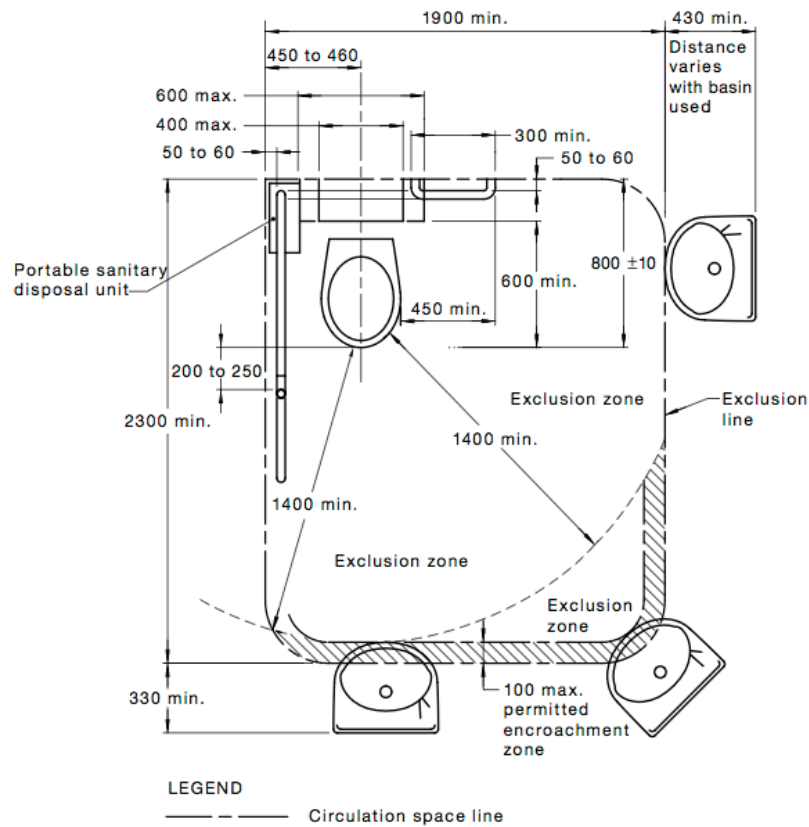
- Shower Area – 1:60 to 1:80 fall to shower waste outlet
- Bathroom Area – 1:80 to 1:100

SIGNAGE

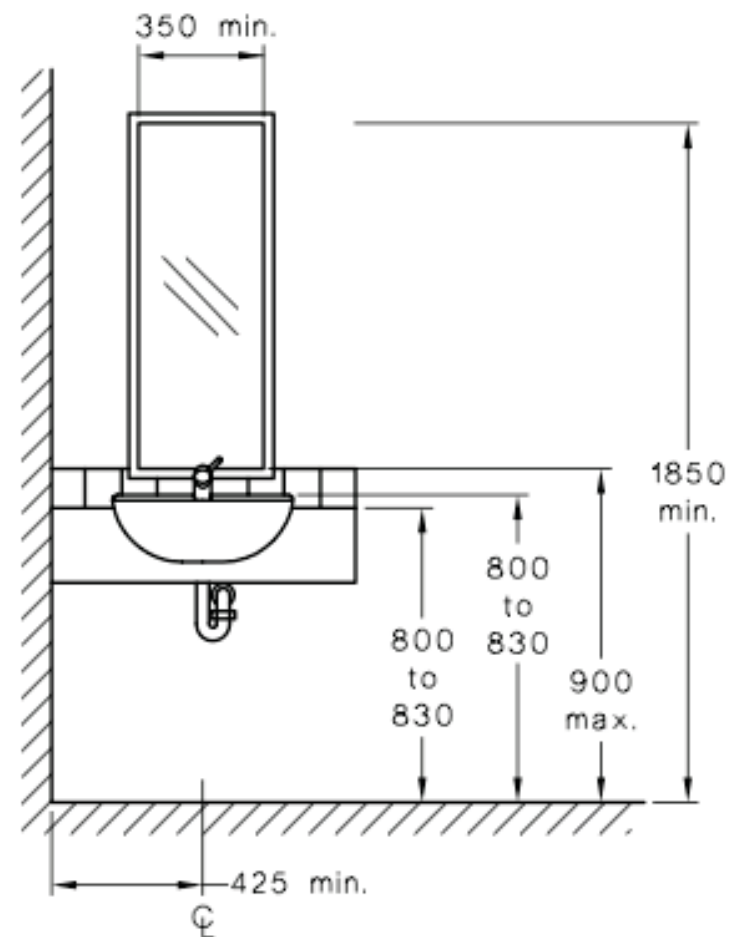
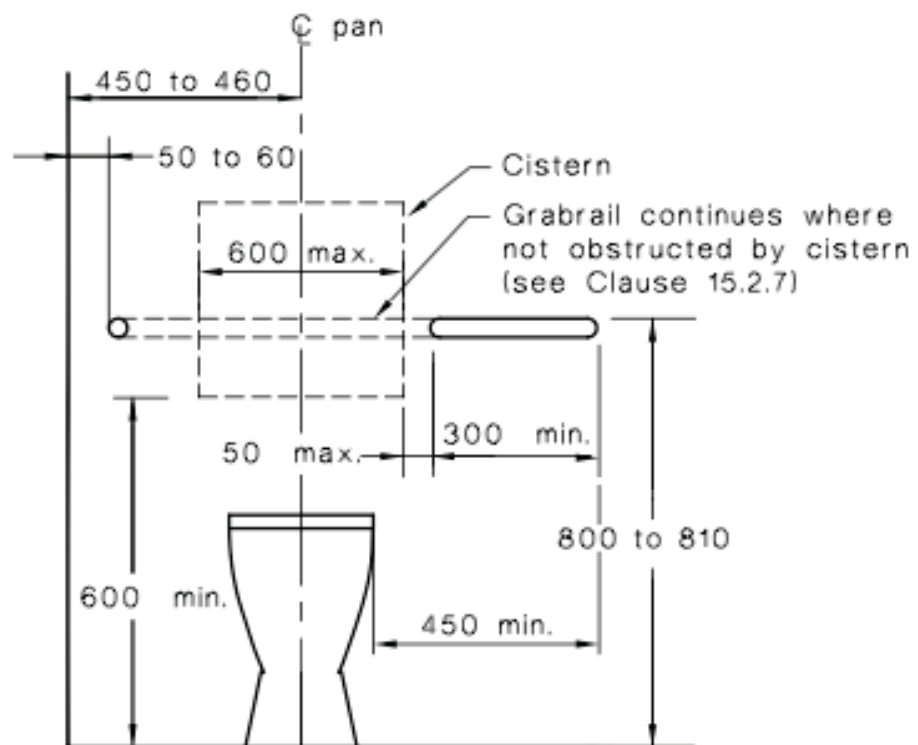
- Braille Indicators with Unisex International Symbol located at 1250mm from finished floor level measured to
- Bottom of sign. RH or LH determines right or left hand sided pan grabrail location.



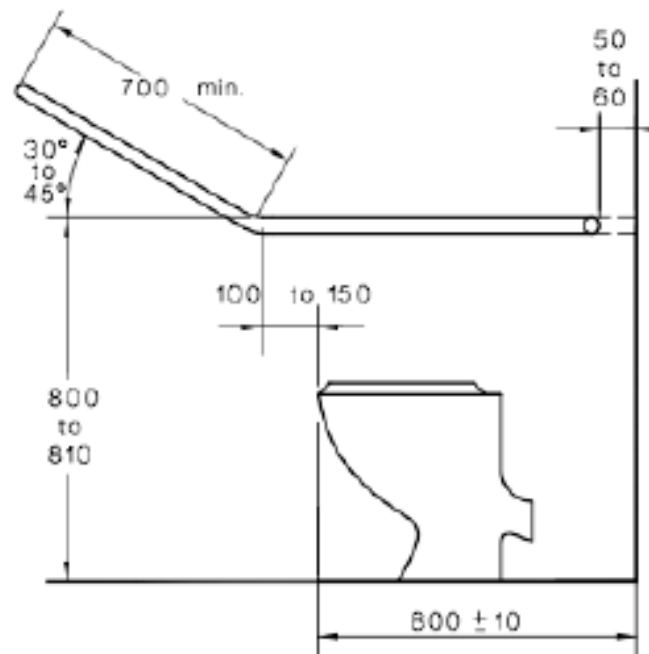
ACCESSIBLE TOILET



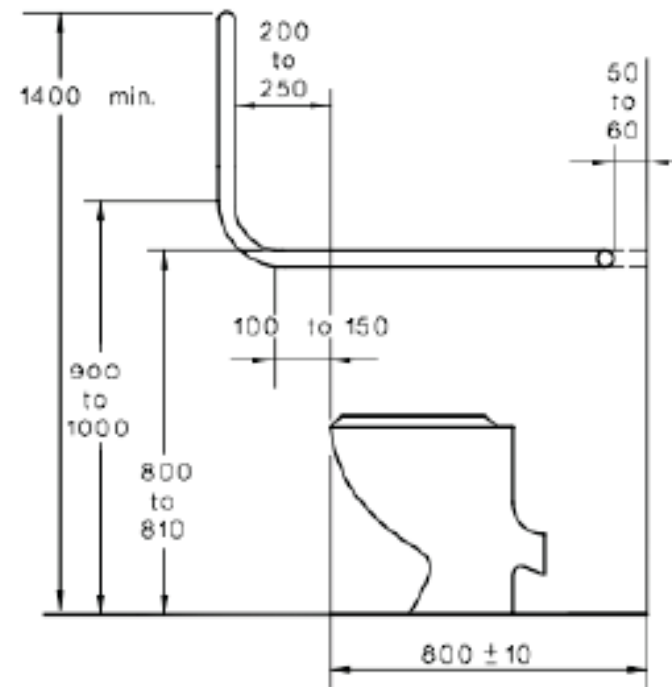
ACCESSIBLE TOILET



ACCESSIBLE TOILET



(i) Option A



(ii) Option B

AMBULANT TOILET

MINIMUM CLEARANCE

- Compartment Width – 900 to 920mm (measured wall to wall)
- Compartment Cubicle Depth – 900mm minimum (measured from edge of pan to door)
- Clear Circulation Space – 900mm x 900mm in front of door (depending on doorway option)
- Clear Door Width – 700mm

DOOR LATCH

- Height – 900 to 1100mm (measured to top of handle from finished floor level)
- Clearance – 35 to 45mm (measured from inside of handle to door face)
- Handle Grip – 20mm min curve at end of handle to ensure grip
- Snib locks – 45mm minimum length of spindle

PAN

- Height of Pan – 460 to 480mm (measured from finished floor level to top of seat)
- Edge of Pan to Rear Wall – 610 to 660mm

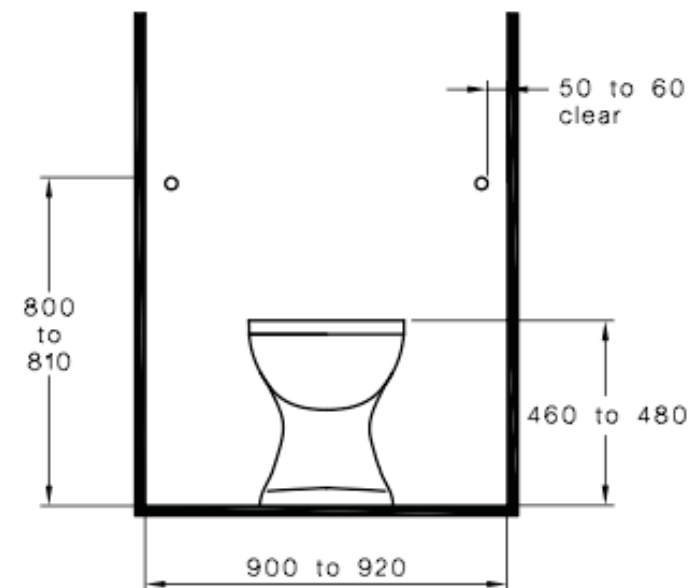
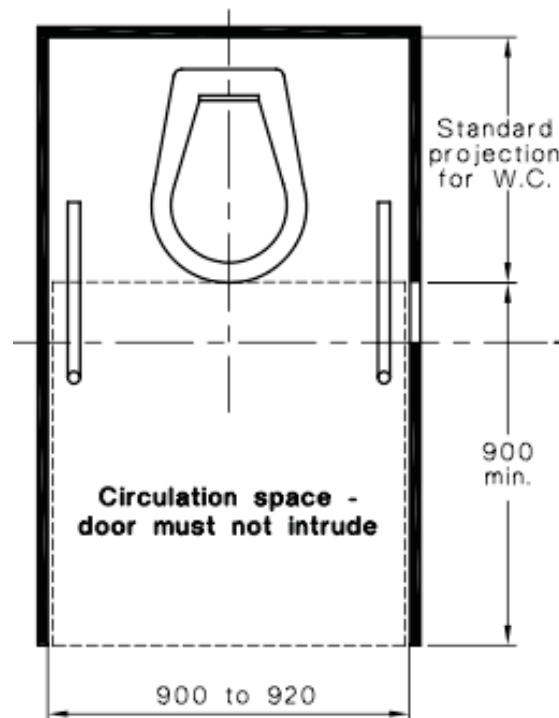
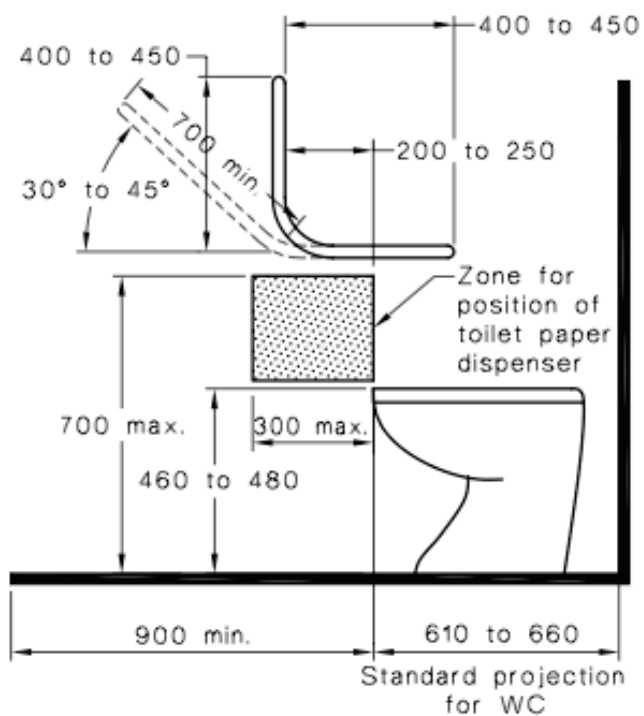
GRABRAILS (90° OR 35° TO 45° OPTION)

- Height – 800 to 810mm (measured to top of grabrail from finished floor level)
- Setback from Wall – 50 to 60mm
- Size – 30 to 40mm outside diameter
- Note, compartment construction, materials and fastenings are required to be able to withstand a force of 1100N applied at any position and in any direction without deformation or loosening.

FIXTURES AND FITTINGS

- Clothes hanging device – 1200 to 1350mm from finished floor level (min 500mm from corners)
- Toilet Paper Dispenser Zone – 700mm from finished floor level and 300mm from edge of pan
- Note, removable door hinges required to be provided if door swinging inwards and minimum 1200mm from edge of pan to doorway is not achievable.

AMBULANT TOILET

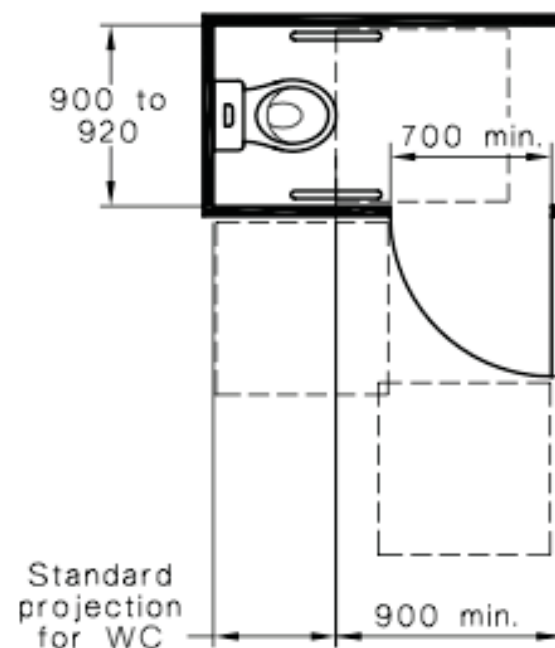
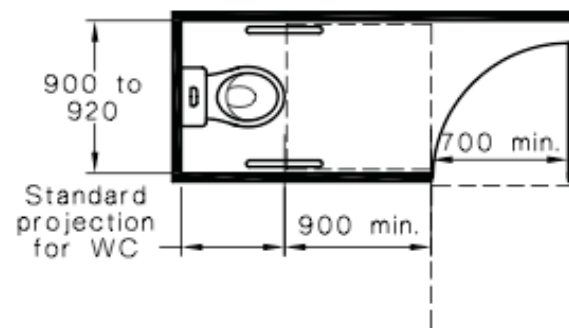
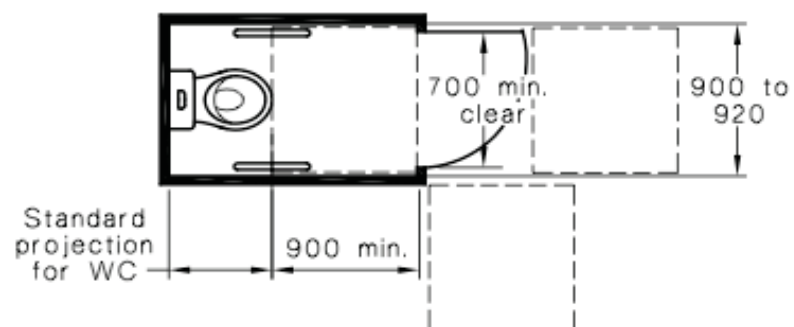
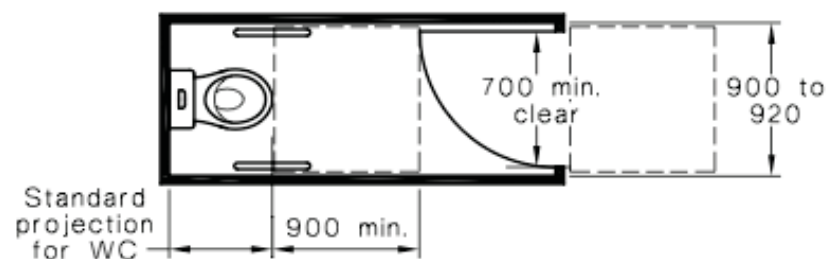


AMBULANT TOILET

LEGEND:



900 x 900 circulation space



RAMPS, WALKWAYS & LANDINGS

DOOR THRESHOLD RAMP

- Rise – 35mm maximum
- Length – 280mm maximum
- Gradient – 1:8 (not steeper)
- Distance to Door – 20mm max (measured from top of ramp to door)
- Edges – 45° splay where not abutting a wall

STEP RAMP

- Rise – 190mm maximum
- Length – 1900mm maximum
- Gradient – 1:10 (not steeper)
- Edges – 45° splay, minimum 450mm high wall/barrier or kerb rail where balustrade is provided
- Landing – 1200mm or 1500mm where change of direction (additional requirements where door in landing)

KERB RAMP

- Rise – 190mm maximum
- Length – 1520mm maximum
- Gradient – 1:8 (not steeper)
- Landing – 1200mm or 1500mm x 2000mm at T-Intersection or 1500mm x 1500mm at single change of direction

RAMP (BETWEEN 1:14 AND 1:20)

- Gradient: 1:14
- Length – 9000mm maximum (for 1:14 ramp)
- Setback – 900mm from line of boundary or 400mm from line of partition wall
- Landing – 1200mm or 1500mm where change of direction (additional requirements where door in landing)

WALKWAY

- Length – 15m maximum for 1:20 and 25m maximum for 1:33
- Landings – 1:33 or shallower do not require landings

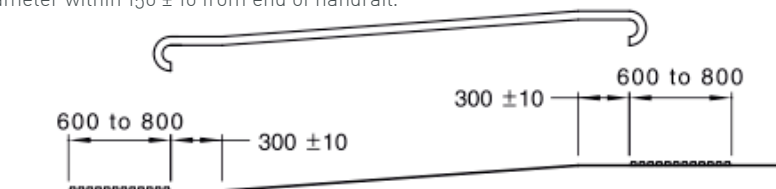
HANDRAILS (REQUIRED FOR 1:14 RAMP)

- Height – 865mm to 1000mm
- Setback from Wall – 50mm minimum
- Handrail Size – 30 to 50mm
- Clear Width – 1000mm (measured between internal edges of handrails)
- Length – 300mm minimum extension past ramp on either side
- Terminations – 180° turn, turn 180° and return to post, return to floor/post, down 90° to floor and 90° into side wall
- Kerb Rail – 150mm minimum

TACTILES (REQUIRED FOR 1:14 RAMP)

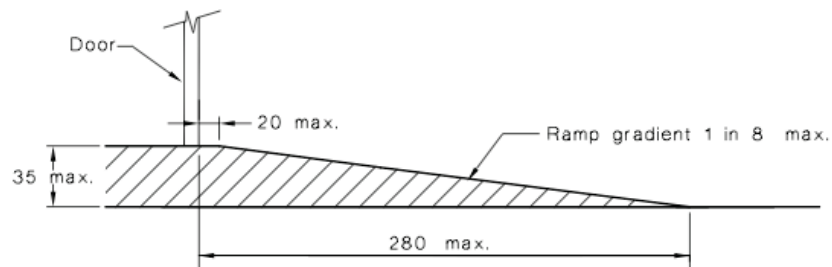
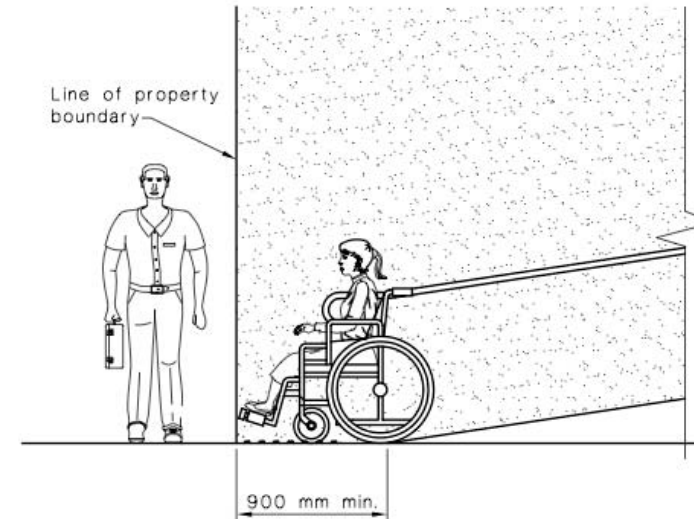
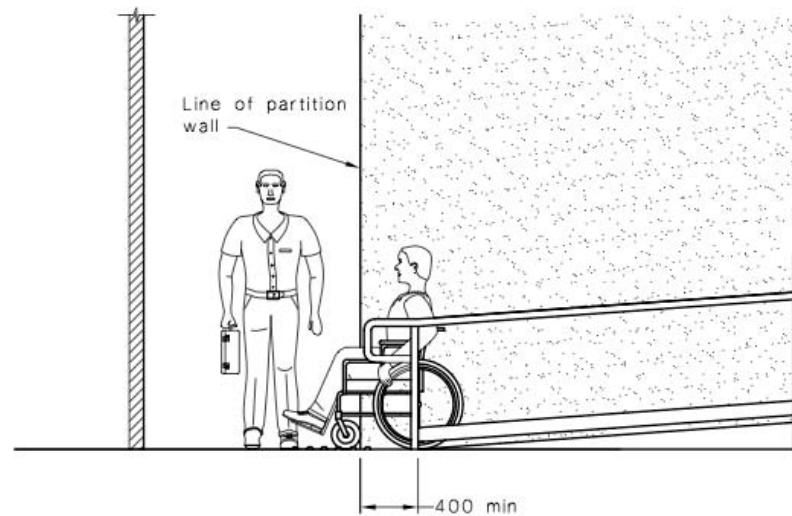
- Colour contrasting (minimum 30% with floor)
- Location – top and bottom of ramp
- Setback – 300 ± 10 from end of ramp
- Length – 600 to 800mm or 300 to 400mm where landing less than 3000mm in length
- Width – 1000mm minimum (distance between handrails)

Note, where tactiles are not required under the Building Code of Australia the handrails are required to be provided with a domed button 4 to 5mm in height and 10 to 12mm in diameter within 150 ± 10 from end of handrail.



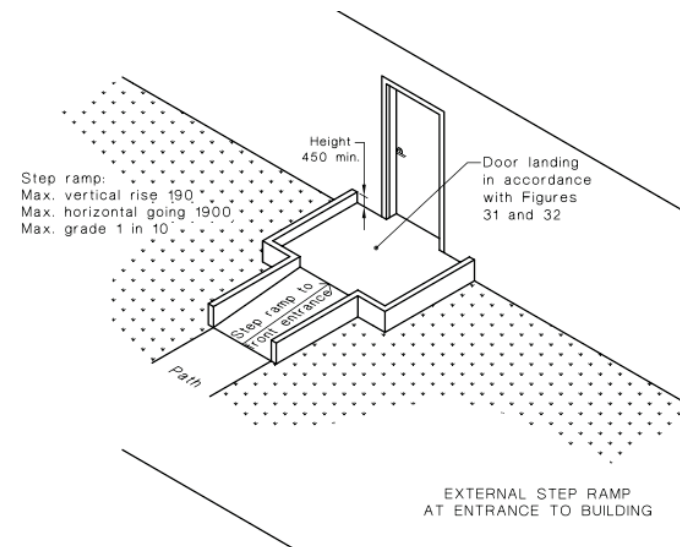
All ramp and landing surfaces must be provided with a minimum slip resistant classification nominated in BCA Table D2.14 when tested in accordance with AS4586.

RAMPS, WALKWAYS & LANDINGS

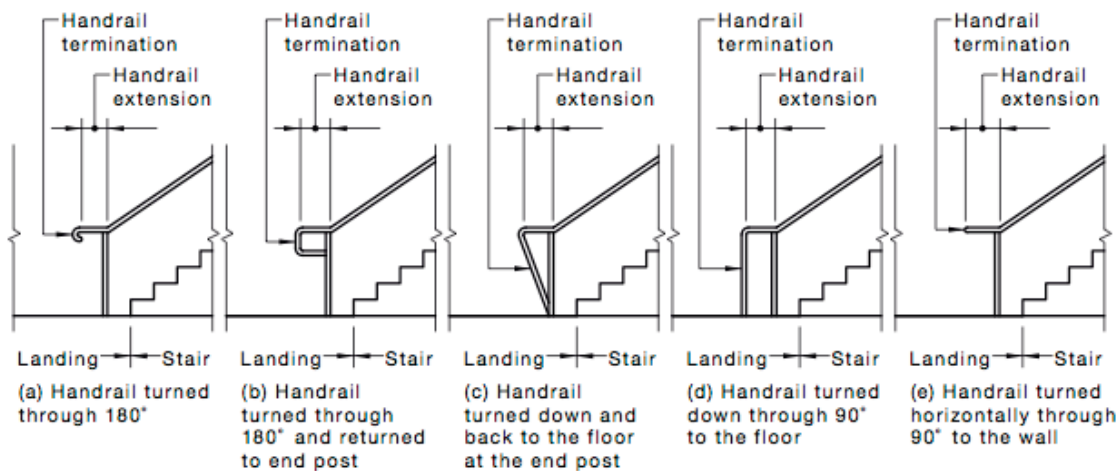
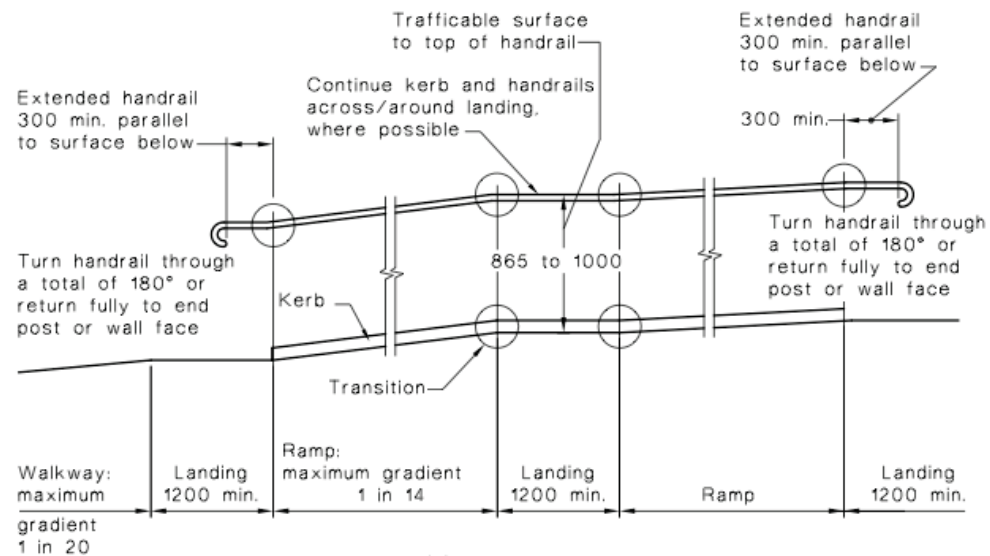
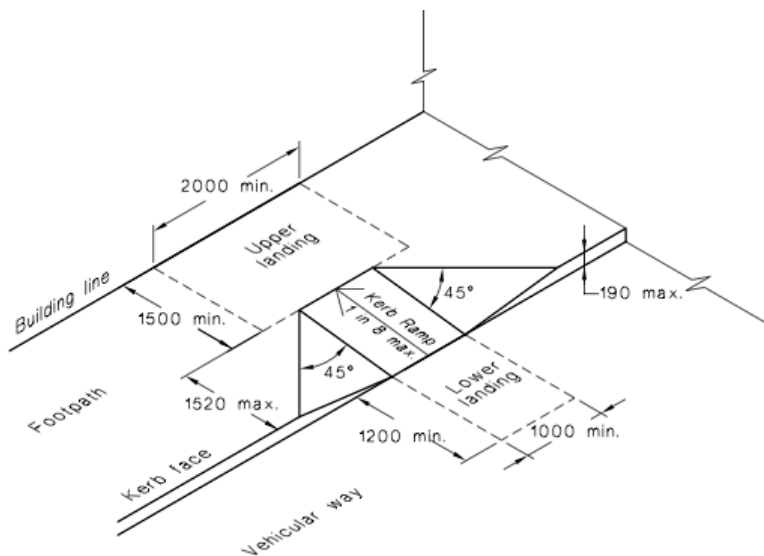


DIMENSIONS IN MILLIMETRES

FIGURE 21 THRESHOLD RAMP



RAMPS, WALKWAYS & LANDINGS



STAIRWAYS

STAIR CONSTRUCTION

- Rise – 115 to 190mm and maximum 18 (consistent throughout)
- Going – 250 to 355mm (consistent throughout)
- Opaque risers to be provided
- Stair nosing to have sharp intersection and not project beyond the face of the riser
- Nosing Strip – 50 to 75mm and colour contrasting (minimum 30% with stair thread)
- Setback – 900mm from line of boundary or 400mm from line of partition wall
- Landing – 750mm minimum or width of door leaf

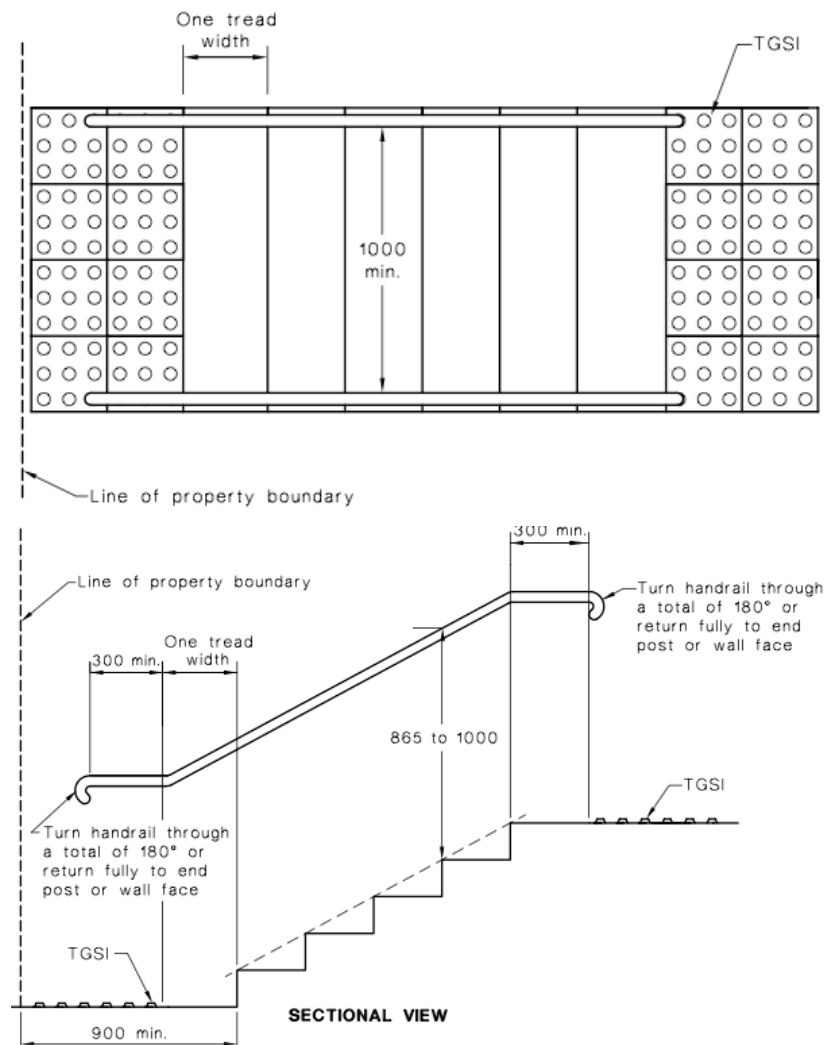
BALUSTRADE/HANDRAILS

- Balustrade openings to not permit a 125mm sphere to pass through
- Height – 865mm to 1000mm
- Handrails Setback from Wall – 50mm minimum
- Handrail Size – 30 to 50mm diameter
- Clear Width – 1000mm (measured between internal edges of handrails)
- Length – 300mm minimum extension (plus additional tread width at bottom of stair)
- Terminations – 180° turn, turn 180° and return to post, return to floor/post, down 90° to floor and 90° into side wall

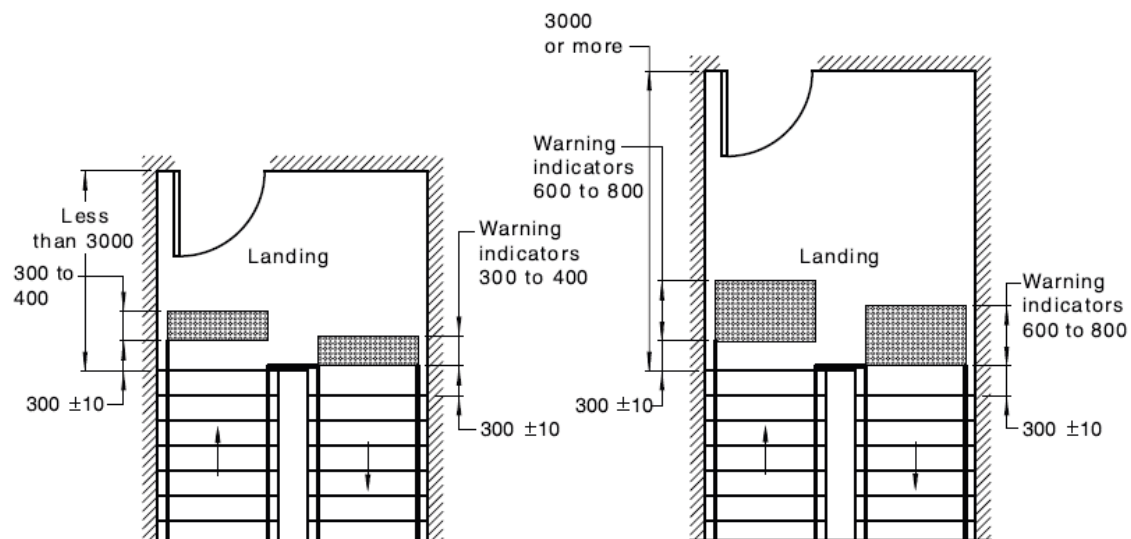
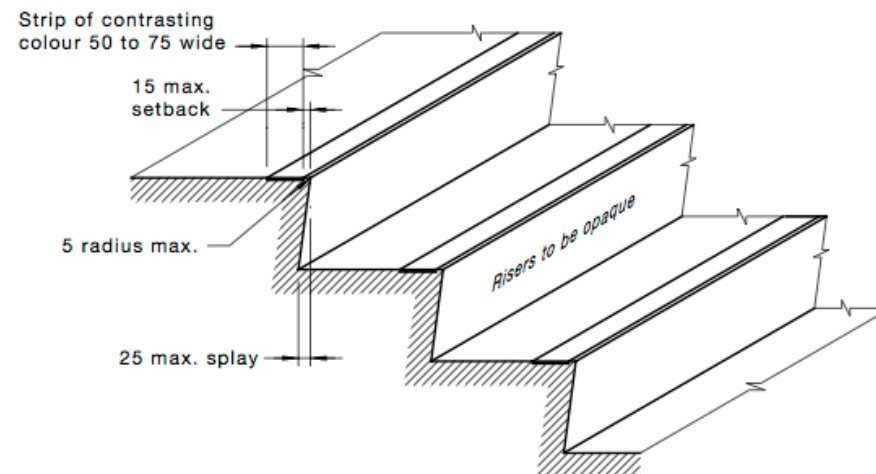
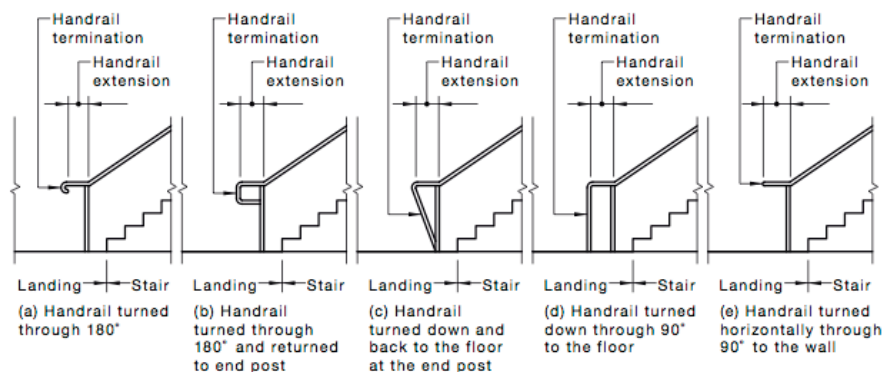
TACTILES

- Colour contrasting (minimum 30% with floor)
- Location – top and bottom of stairway
- Setback – 300 ± 10 from last tread
- Length – 600 to 800mm or 300 to 400mm where landing less than 3000mm in length
- Width – 1000mm minimum (distance between handrails)

Note, where tactiles are not required under the Building Code of Australia the handrails are required to be provided with a domed button 4 to 5mm in height and 10 to 12mm in diameter within 150 ± 10 from end of handrail.



STAIRWAYS



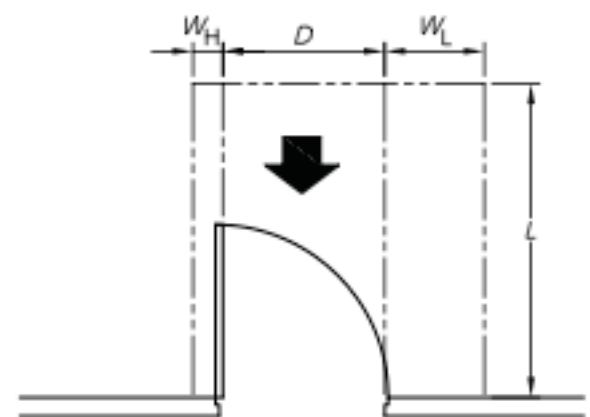
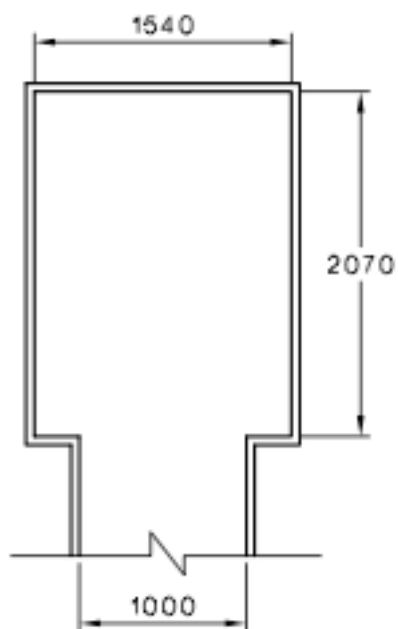
(a) Plan of warning tactile at a stairway landing less than 3000 with no continuous outer handrail

(b) Plan of warning tactile at a stairway landing 3000 or more

ADDITIONAL ITEMS

CHANGE ROOMS

- Compartment Size – 1540mm x 2070mm
- Entry – 850mm clear door width or 1000mm if curtain provided
- Door Circulation Space – 530mm latch side, 1450mm door circulation and 110 hinge side based on front approach

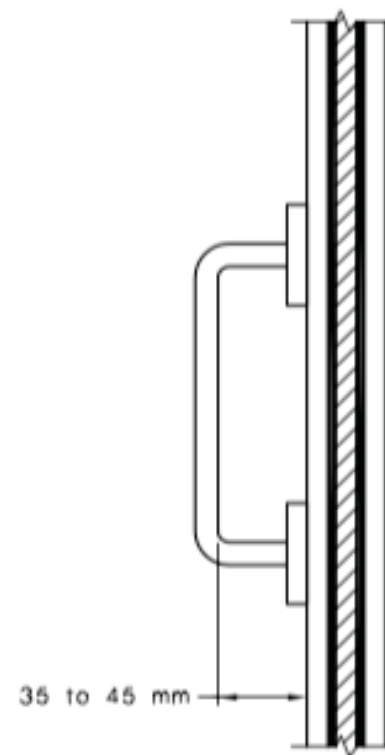
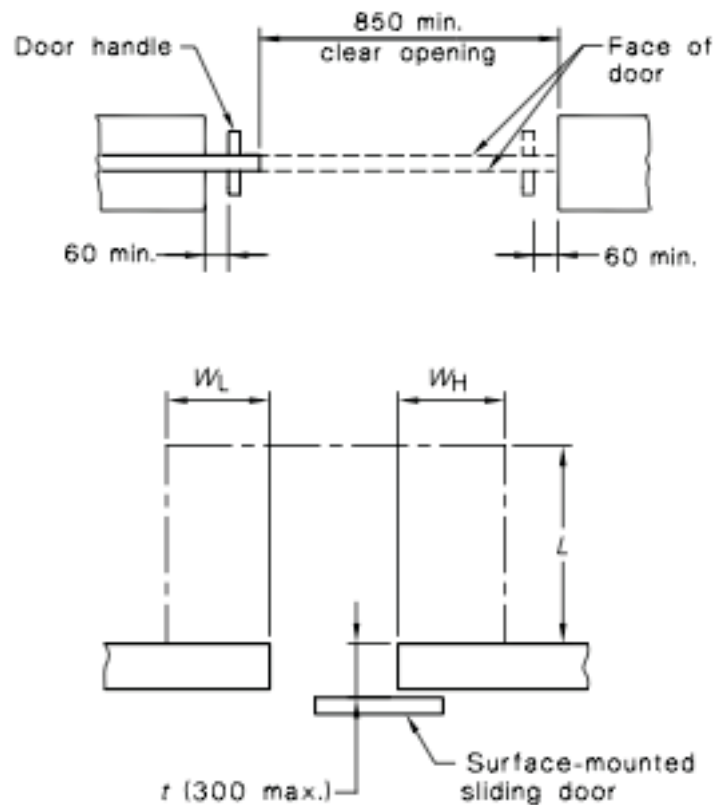


Dimension D	Dimension L	Dimension W_H	Dimension W_L
850	1450	110	530
900	1450	110	530
950	1450	110	530
1000	1450	110	530

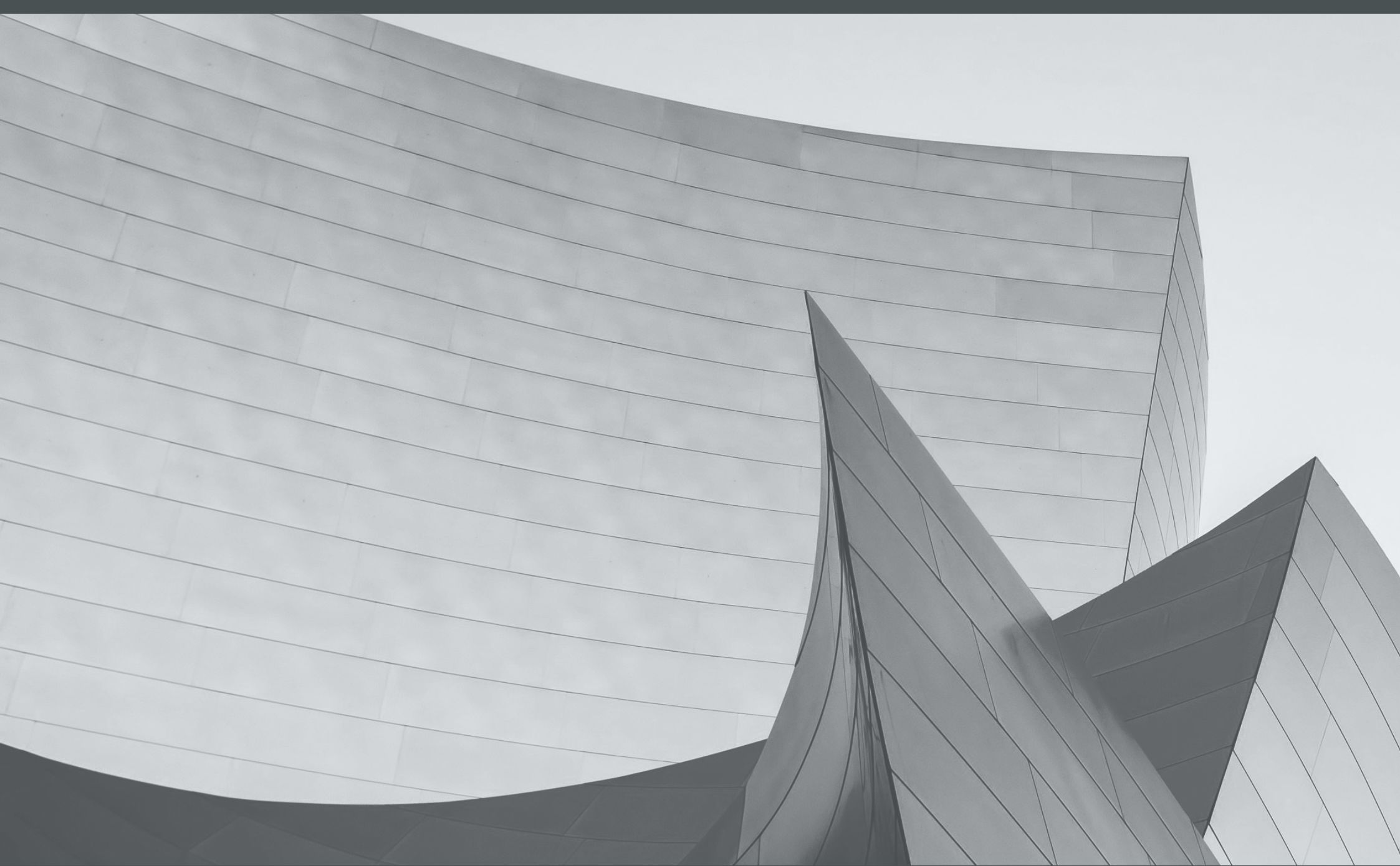
ADDITIONAL ITEMS

SLIDING DOORS

- Clear Door Width – 850mm
- Handle Clearance – 35 to 45mm (measured from inside of handle to door face)
- Type of Handle – 'D' type handles to be provided to sliding doors
- Handle to be setback minimum 60mm from cavity when in open/closed position
- Wall Width – 300mm maximum (surface mounted sliding doors)



All ramp and landing surfaces must be provided with a minimum slip resistant classification nominated in BCA Table D2.14 when tested in accordance with AS4586.



GRIMBOS
BUILDING SURVEYORS

LEVEL 1 SUITE 1
397 SMITH STREET
FITZROY 3065

PHONE: +61 3 9419 7000
FAX: +61 3 9419 9007

INFO@GRIMBOS.COM.AU
GRIMBOS.COM.AU

ABN: 805 912 38414